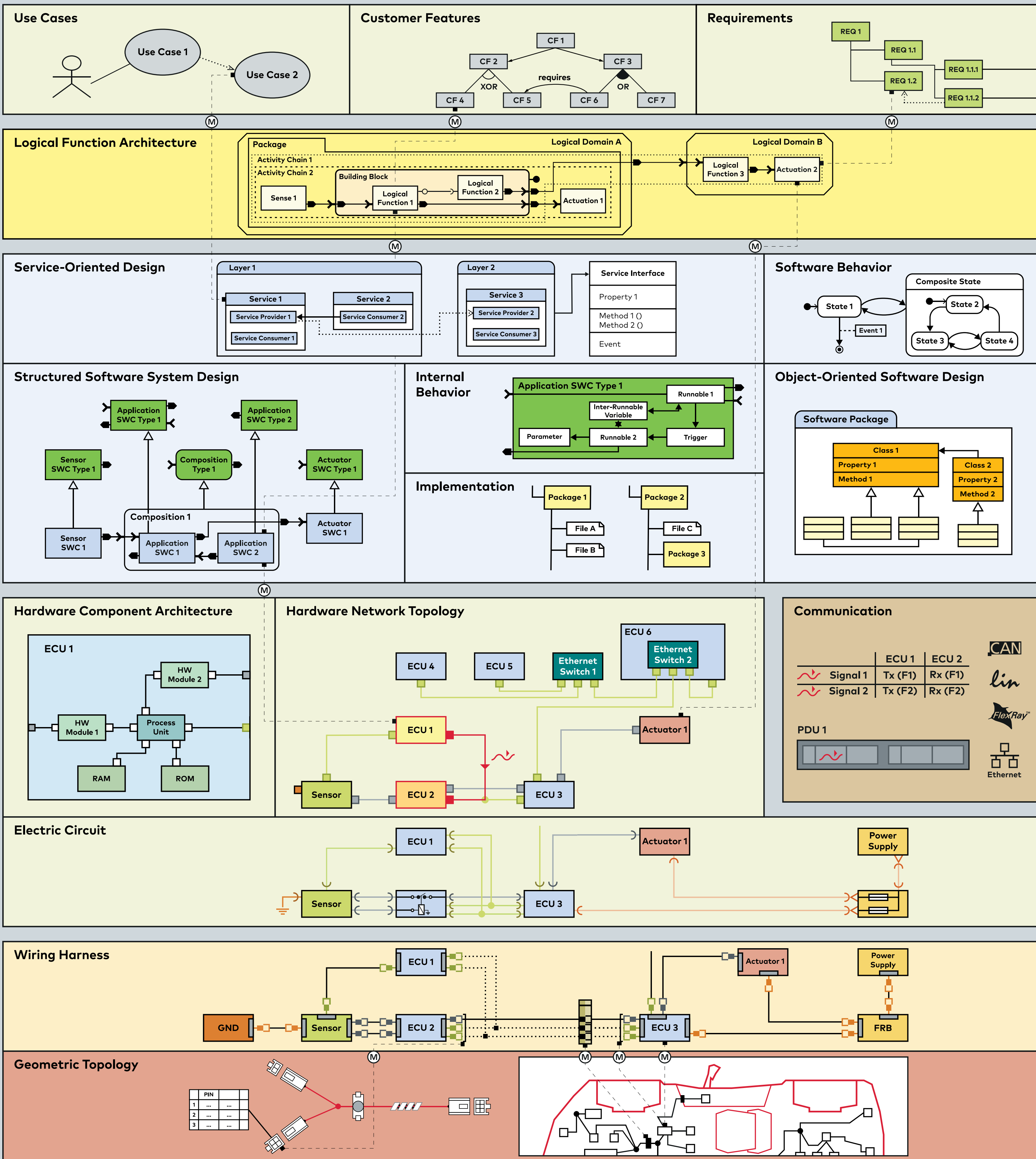
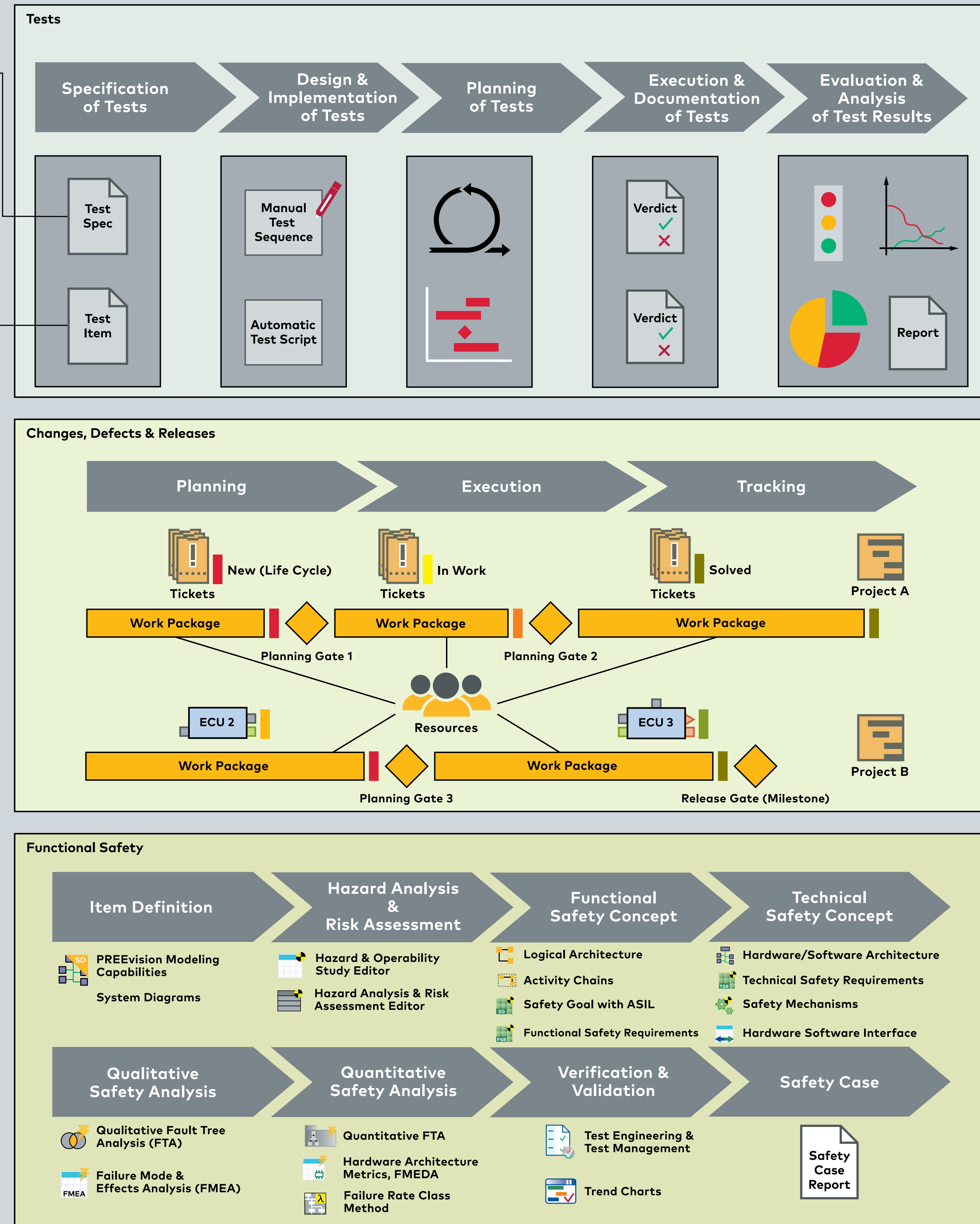


PREEvision Layers



Process & Team Support



Model-Based Electric/Electronic Development from Architecture Design to Series Production
 PREEvision is the premier tool for model-based development of distributed, embedded systems in the automotive industry and related fields. This engineering environment supports the entire technical development process in a single integrated application. For the modeling of entire electric/electronic systems, from requirements to software and hardware architectures to the wiring harness, PREEvision provides a comprehensive data model with dedicated abstraction layers.

